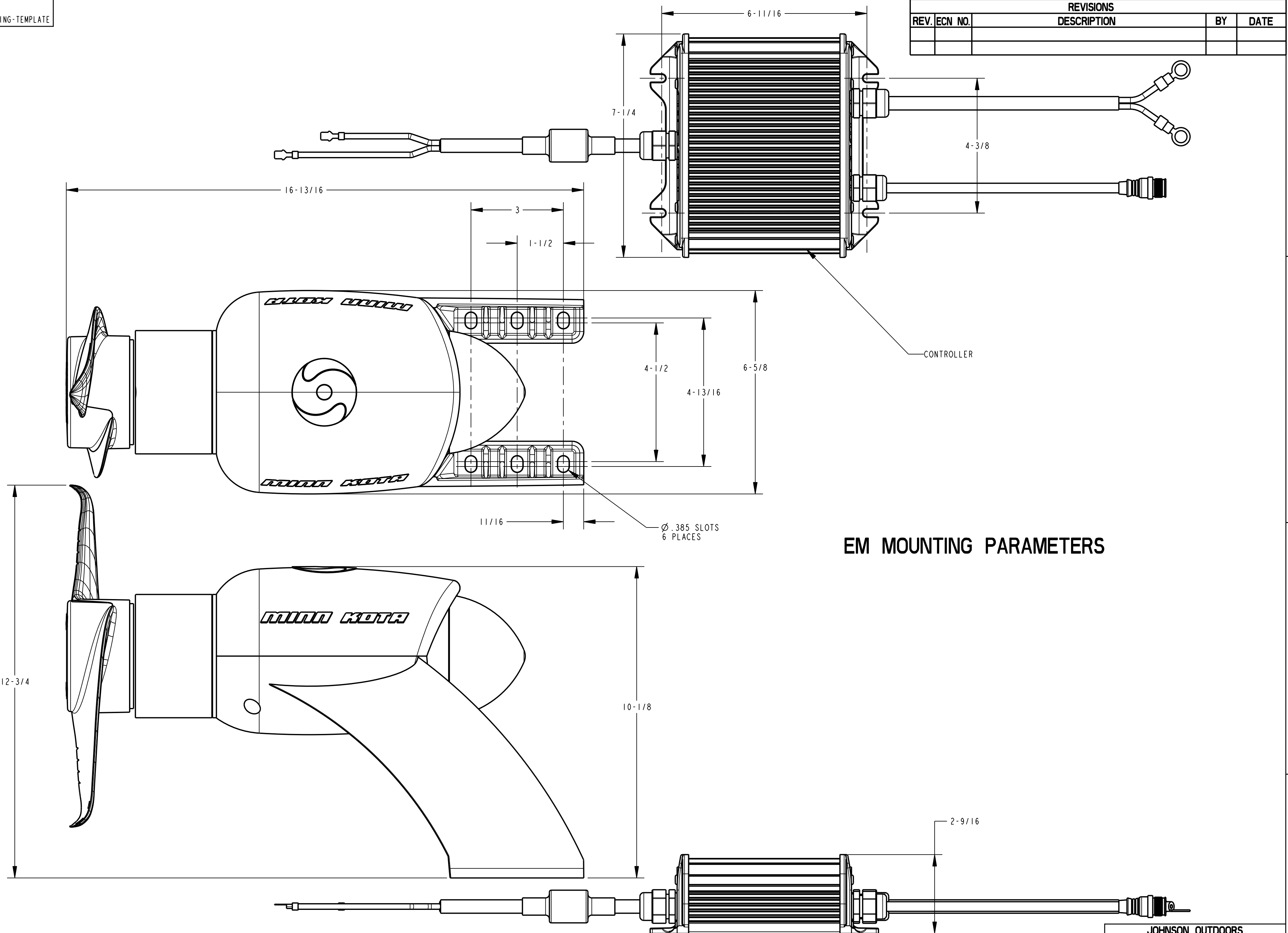


PART NO:  
EM-MOUNTING-TEMPLATE

REVISIONS				
REV.	ECN NO.	DESCRIPTION	BY	DATE



EM MOUNTING PARAMETERS

JOHNSON OUTDOORS  
MARINE ELECTRONICS, INC.

PART NAME: TBD  
PART NO: EM-MOUNTING-TEMPLATE

**TOLERANCES:** UNLESS OTHERWISE SPECIFIED  
 .XXX ± .010    .X    ± .015  
 .XXX ± .005    FRACTIONAL ± 1/64  
 .XX ± .010    ANGULAR ± 0° 30'

**QUALITY REQUIREMENTS:**  
 Circled dimensions are critical.  
 Dimensions marked \* require Proof of Quality with each shipment.

**CONFIDENTIAL PROPERTY:** This document is the confidential property of Johnson Outdoors and is loaned subject to return upon demand; title to same is never sold/transferred for any reason. This document is to be used only pursuant to written instructions of Johnson Outdoors. All rights to designs and inventions are reserved by Johnson Outdoors. Possession of this document is accepted subject to the foregoing.

Shall be RoHS compliant per european community directive (2002/95/EC)

**THIRD ANGLE PROJECTION**

DRAWN BY:    DATE:   

SCALE: 0.500=1

MATERIAL:    U/M:   

LIFECYCLE STATUS:    I.N.    SHEET 1 OF 1    REV:    C SIZE