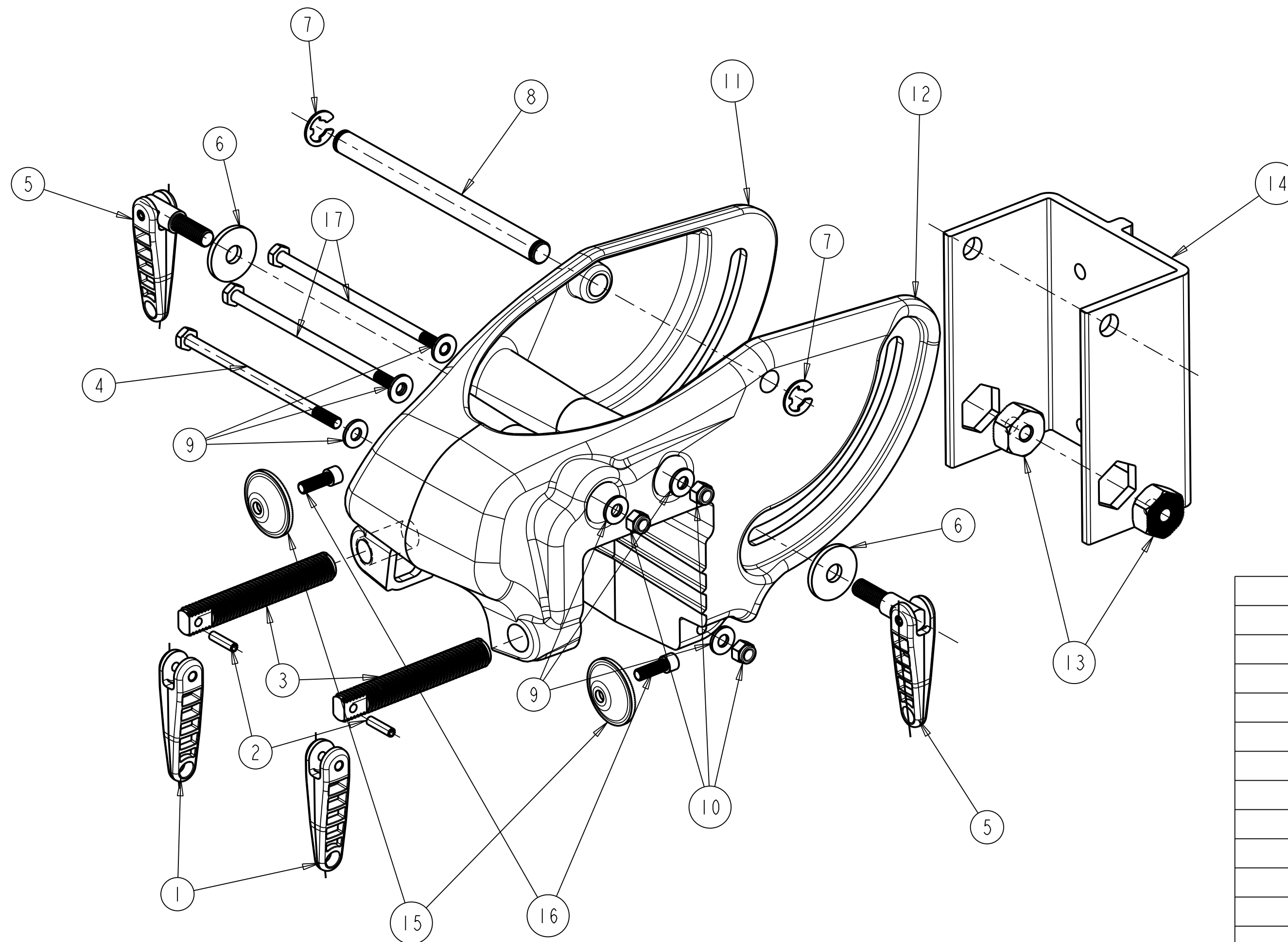


Width:

Casting Widest Point(Items 11 &12): 6.5"

Outside Edge of Clamp Washers(Item 15): 7.25"

Furthest Points, Tension Handles (Item 5): 7.5"



17	2053509	BOLT 1/4 X 5.5"	2
16	2263402	1/4 - SCREW	2
15	2011710	CLAMP - WASHER	2
14	2051801	EXTRUSION	1
13	2053105	NUT - BRASS	2
12	2051955	BRACKET - RIGHT	1
11	2051945	BRACKET - LEFT	1
10	9905212	1/4 NYLOC NUT	3
9	2051722	1/4 WASHER	6
8	2050500	HINGE PIN	1
7	2053210	E-RING	2
6	2051715	3/8 FENDER WASHER	2
5	2050922	TENSION HANDLE	2
4	2053510	BOLT 1/4 x 5"	1
3	2051300	CLAMP SCREW	2
2	2052625	SPRING PIN	2
1	2050925	HANDLE	2
ITEM No.	PART No.	DESCRIPTION	QTY.