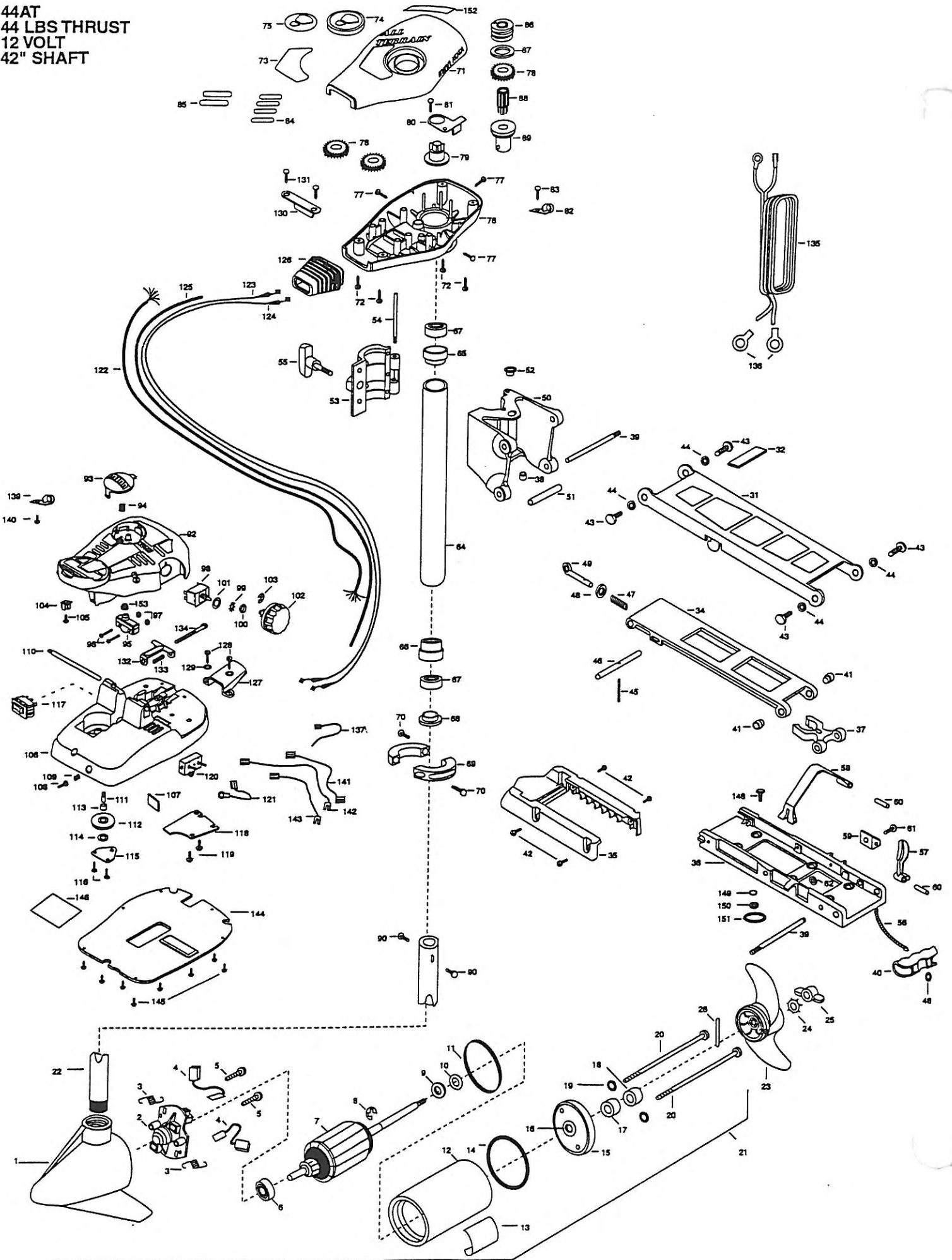


44AT
44 LBS THRUST
12 VOLT
42" SHAFT



of the Canadian model and serial numbers from the par... may be by cash, personal check, Discover Card MasterCard or VISA. To order, call 1-800-227-6433 or FAX 1-800-527-4464.

fuera de los Estados Unidos, consultar la lista anexa para ubicar el Centro de servicio autorizado MINN KOTA. No dejar de incluir el número del MODELO y el número de SERIE del motor para el cual se solicitan las piezas. Usar siempre los números de pieza correctos indicados en la lista de piezas.

Hors de États-Unis, voir la liste ci-jointe pour le Centre de Service Agréé MINN KOTA le plus proche. Lors d'une commande, ne pas oublier de fournir le numéro de modèle et le numéro de série du moteur. Toujours mentionner le numéro de pièce exact figurant sur la liste des pièces de rechange.

Fora da América do Sul, consultar a lista anexa para localizar o Centro de Serviço Autorizado MINN KOTA. Não deixe de incluir o número do MODELO e o número de SÉRIE do seu motor ao pedir peças. Sempre use os números corretos das peças da lista de peças.

| | | | | | | | | |
|---------|---------|--------------------------------------|-----|---------|--|------|---------|---|
| 40926 1 | 406026 | BRUSH END HOUSING W/SP COIL | 54 | 2262640 | PIN-HINGE DOOR | 103 | 2263000 | E-RING TRU - ARC #5133-43 |
| 2 | 406403 | BRUSH PLATE ASSEMBLY | 55 | 2260180 | KNOB-HINGE COVER A/T | 104 | 2260730 | CONNECTOR 1/4 MALE TAB |
| 3 | 406082 | BRUSH SPRING (2 REQ'D) | 56 | 2251600 | ROPE - (31") | 105 | 2332103 | SCREW - 6 - 20 X 3/8 THD*(SS) |
| 4 | 406071 | BRUSH ASSEMBLY (2 REQ'D) | 57 | 2267200 | LATCH LEVER-(565T) | 106 | 2264550 | FOOT PEDAL BASE, PLASTIC |
| 5 | 406342 | BRUSH PLATE SCREW (2 REQ'D) | 58 | 2263800 | STRAP-HOLD DOWN (565T) | 107 | 2266413 | TENSION SCREW PLATE |
| 6 | 406010 | BALL BEARING T.P ARMATURE | 59 | 2261910 | BRACKET HOLD DOWN STRAP | 108 | 2262650 | PIN, CIRCUIT BREAKER RSV |
| 7 | 406208 | ARMATURE ASSEMBLY W/BEARING | 60 | 2260500 | PIN-ROLL LATCH LEVER (2 REQ'D) | 109 | 2262721 | SPRING, RESET PIN |
| 8 | 405300 | E-RING | 61 | 2263440 | SCREW - 10 - 24 X 3/4 (18-8 SS) | 110 | 2260511 | PIN-PIVOT A/T FT PDL |
| 9 | 406170 | WASHER - THRUST STEEL (AS REQ'D) | 62 | 2333101 | NUT-HEX (3HP-SS) | 111 | 2260515 | PIN-PULLEY-AXLE |
| 10 | 405171 | WASHER - NYLTRON (AS REQ'D) | 63 | 2992015 | TUBE W/BEARING RACE ASSY | 112 | 2262300 | PULLEY (FOOT PEDAL) |
| 11 | 406490 | GASKET | 64 | 2272066 | TUBE OUTER -18' 4 HOLES | 113 | 2260000 | BEARING-PULLEY |
| 12 | 409259 | CENTER HOUSING FIELD ASSEMBLY | 65 | 2266260 | BEARING RACE - (565T) | 114 | 2261705 | WASHER-NYLATRON A/T PULL |
| 13 | 2006609 | DECAL - MOTOR LWR UN STGR/LNG | 66 | 2266220 | BEARING RACE - STEEL | 115 | 2266400 | COVER-PULLEY (STAMPING) |
| 14 | 406470 | O-RING | 67 | 2266000 | BEARING BALL - STEEL (2 REQ'D) | 116 | 2301310 | SCREW - 8 - 18 X 1/2 (SS) (2 REQ'D) |
| 15 | 406033 | PLAIN END HOUSING W/BEARING & SEALS | 68 | 2266115 | BEARING CONE | 117 | 2254031 | SWITCH-MOM/OFF/COM |
| 16 | 406600 | FLANGE BEARING (SERVICE ONLY) | 69 | 2261615 | COLLAR HALF-ZINC-2 PER | 118 | 2266412 | SWITCH PLATE, FT PEDAL |
| 17 | 406461 | SEAL | 70 | 2263450 | SCREW - 10 - 24 X 7/8 UNC-24TH (2 REQ'D) | 119 | 2332103 | SCREW - 6 - 20 X 3/8 THD*(SS) (2 REQ'D) |
| 18 | 406471 | SEAL - W/CUP | 71 | 2260264 | COVER - CTR BOX A/T '96 | 120 | 2268200 | CIRCUIT BREAKER-30AMP |
| 19 | 405462 | O-RING- THRU BOLT (2 REQ'D) | 72 | 2372100 | SCREW - 8 - 18 X 5/8 THD* (SS) (4 REQ'D) | 121 | 2260601 | WIRE CNTG-10GA.BREAKER |
| 20 | 406353 | THRU BOLT (2 REQ'D) | 73 | 2265610 | DECAL-COVER (44AT) | 122 | 2261207 | WIRE HARNESS |
| 21 | 2099061 | MOTOR ASSY 12V 3.62 5SPD | 74 | 2260150 | POINTER DISC TRNSLCNT RED | 123 | 2267500 | CABLE ASSEMBLY-RIGHT (5') |
| 22 | 2032063 | TUBE (COMP)W/CSK HOLE - 42" | 75 | 2265800 | DECAL-INDICATOR | 124 | 2267510 | CABLE ASSEMBLY-LEFT (5') |
| 23 | 2091150 | PROPELLER (W.WEDGE)T PROS | 76 | 2262531 | CONTROL BOX-PLASTIC | 125 | 2265430 | CABLE JACKET (5') |
| 24 | 2051700 | LOCKWASHER-PROP (MEDIUM) | 77 | 2262109 | SCREW - 8 - 32 X 1/2 THD CUT (3 REQ'D) | 126 | 2265110 | BOOT-CONTROL BOX |
| 25 | 2053100 | NUT-PROP (MEDIUM) | 78 | 2267800 | GEAR-INDICATOR (3 REQ'D) | 127 | 2265115 | BOOT-FOOT PEDAL BASE |
| 26 | 2092600 | PIN-DRIVE (95 - 4HP'S) (SS) | 79 | 2262220 | INDICATOR-DRIVE | 128 | 2372100 | SCREW - 8 - 18 X 5/8 (2 REQ'D) |
| 30 | 2991954 | STD-BOWMT FW 30, 33, 36AT | 80 | 2261905 | BRACKET/INDICATOR | 129 | 2261714 | WASHER-MAXXUM FT PDL (2 REQ'D) |
| 31 | 2264201 | ARM-UPPER FW/STD,BWGRD | 81 | 2301310 | SCREW - 8 - 18 X 1/2 (SS) | 130 | 2261900 | BRACKET-CONDUIT |
| 32 | 2265120 | BUMPER (UPPER ARM) | 82 | 2263201 | CLAMP WIRE HARNESS MICRO | 131 | 2301310 | SCREW - 8 - 18 X 1/2 (SS) (2 REQ'D) |
| *34 | 2774310 | ARM-LWR PW (INCL 34, 40, 45-49, 56) | 83 | 2301310 | SCREW - 8 - 18 X 1/2 (SS) | 132 | 2263210 | BRACKET-CONDUIT ADJUST |
| 35 | 2263900 | MOTOR REST- (565 TURBO) | 84 | 2375400 | SHRINK TUBE - 1/4 OD X 1-3/4 (4 REQ'D) | 133 | 2262720 | SPRING - CONDUIT ADJUST |
| 36 | 2251942 | BOW PLATE-D/C (MCHD) | 85 | 2355410 | SHRINK TUBE - 3/8 OD X 2 (2 REQ'D) | 134 | 2263460 | SCREW - 1/4 - 20 X 2 |
| 37 | 2293801 | TUBE LOCK- "D" RAW (300-SC) | 86 | 2232360 | PULLEY-CABLE DRUM | 135 | 2261224 | LEADWIRE - W/RING TERM. (2 REQ'D) |
| *38 | 2264705 | INSERT-HINGE BASE(STD MT) | 87 | 2261730 | WASHER-NYLON A/T CON B | 136 | 2020700 | TERMINAL RING, 3/8 (2 REQ'D) |
| 39 | 2260506 | HINGE-PIN (HEADLESS) ZINC (2 REQ'D) | *88 | 2267805 | PINION DRIVE (ZINC PLATED) | 137 | 2256300 | TIE WRAP - 5.5 BLACK |
| 40 | 2150400 | PULL-GRIP (RAW) | 89 | 2266245 | BEARING RACE- (TOP) (565T) | 139 | 2263201 | CLAMP WIRE HARNESS MICRO |
| 41 | 2236000 | BEARING NYLINER - (2 REQ'D) | 90 | 2263410 | SCREW - 8 - 32 X 5/16 (ZN PL) (2 REQ'D) | 140 | 2332103 | SCREW - 6 - 20 X 3/8 THD (SS) |
| 42 | 2303431 | SCREW 1/4 - 20 X 5/8' PPH (4 REQ'D) | 91 | 2992020 | FOOT PEDAL ASSY, 5-SPEED | 141 | 2260301 | CONNECTING WIRE (SWITCH) |
| 43 | 2293511 | BOLT-UPPER ARM W/LOCTITE (4 REQ'D) | 92 | 2790002 | FOOT PEDAL/PLUG ASSEMBLY(AT) | 142 | 2260311 | CONNECTING WIRE 19 1/4 |
| 44 | 2293500 | BUSHING-SHOULDER (4 REQ'D) | 93 | 2263700 | PUSH-BUTTON FOOT PEDAL | 143 | 2260322 | WIRE, BLK W/BLUE STRP-12 |
| 45 | 2152610 | SPRING-PIN (LOCKBAR) | 94 | 2302732 | SPRING-LOWER PEDAL S/S | 144 | 2266411 | BOTTOM PLATE A/V FOOT |
| 46 | 2233600 | LOCK BAR - (BOW MOUNT) | 95 | 2264020 | SWITCH MOMENTARY | 145 | 9953104 | SCREW - 8 X 1/2 (SS) (8 REQ'D) |
| 47 | 2152700 | SPRING-(LOCKBAR) CAD.PLT | 96 | 2262114 | SCREW-MOUNTING/SWITCH (2 REQ'D) | 146 | 2265606 | DECAL - ALL TERRAIN FT PD |
| 48 | 2151700 | WASHER-EYE SHAFT (.562 OD) (2 REQ'D) | 97 | 2233100 | NUT-SWITCH MOUNT (2 REQ'D) | 147 | 2994803 | BAG ASSEMBLY-(BOLTS,NUTS,WASH |
| 49 | 2153600 | EYE SHAFT-CAD.PLATE | 98 | 2264026 | SWITCH-5 SPEED (ALLTERAIN) | *148 | 2153501 | BOLT-MOUNTING- W/STG (4 REQ'D) |
| *50 | 2771812 | HINGE BASE-(F/W) (INCL 50, 52, 38) | 99 | 2261701 | LOCKWASHER-STAR | *149 | 2151726 | WASHER - 5/16 STD (SS) (4 REQ'D) |
| 51 | 2231570 | SLEEVE ROLLER (HINGE BRAC) | 100 | 2263105 | NUT-HEX | *150 | 2153100 | NUT-5/16 - MOUNTING (4 REQ'D) |
| 52 | 2232350 | EYELET - ROPE | 101 | 2261715 | SPACER-SWITCH 5 SP MODEL | *151 | 2301720 | WASHER - MOUNT/RUBBER (4 REQ'D) |
| 53 | 2261821 | HINGE DOOR-PAINTED F/W | 102 | 2260170 | KNOB-SPEED CONTROL (5 SPD) | 152 | 2315650 | DECAL - COVER PWRMAX/44PD/AT |
| | | | | | | 153 | 2265140 | BOOT - MICROSWITCH |

* THIS ITEM IS PART OF AN ASSEMBLY. THIS ITEM CANNOT BE SOLD SEPARATELY DUE TO MACHINING AND /OR ASSEMBLY THAT IS REQUIRED.

